



Technique	Hand woven / Cut pile	ISO 2424
Finishing options	Binding uni	
Application	Wall to wall, Area rug, Stairway runner	
Design	Custom colour, Custom shape	
Pile composition	90% New Zealand Wool - 10% Cotton	
Total weight	1010 gr/m ²	ISO 8543
Total height	Wall to wall installation - 10 mm Finished rug - 12 mm	ISO 1766
Maximum width	650 cm	ISO 3018
Pattern repeat	Plain	
Domestic use class	Class 23 / domestic heavy use	ISO 10361
Commercial use class	Class 32 / commercial general use	ISO 10361
Reaction to fire	Bfl-s1	ISO 11925-2
Abrasion resistance	2.5 / change after 4000 cycli	ISO 24338
Slip resistant	Yes	
Thermal resistance (R)	Suitable for heated floors	ISO 8302
Luxury class	Luxury Class 5	
Other qualities	Impact noise reduction, Sound absorption, Lightfastness	



Application as wall-to-wall & stairway runner

For wall to wall application we strongly recommend the use of an underlay.

For more information visit www.bomat.eu/en/application

Maintenance

Regular vacuuming is indispensable for the maintenance of any kind of carpet. Prerequisite for a successful removal of stains is the identification of the stain type and the correct approach. The sooner a stain is treated, the easier it is to remove.

We advise you to use a professional carpet cleaning company. More info: www.bomat.eu/en/care-and-maintenance



Beluga



Black



Bombay Brown



Burnt Brick



Castle Wall



Cement



Chalky Brown



Charcoal



Clay



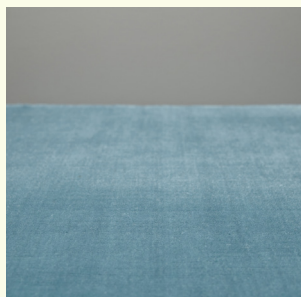
Coffee



Copper



Dusty Yellow



Enigma Blue



Fog



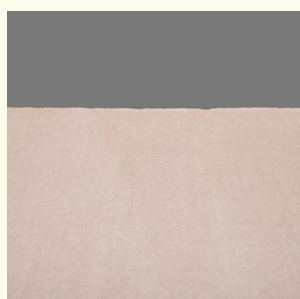
Fungi



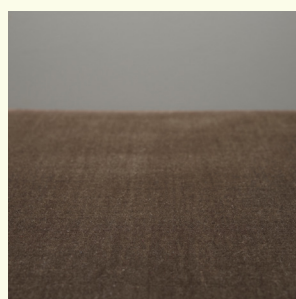
Griffin



Honey



Lilac Ash



Medium Brown



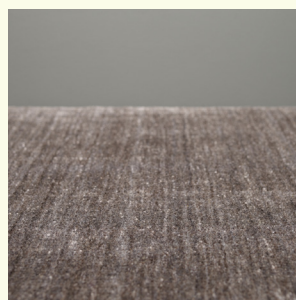
Moon Mist



Mossed Concrete



Mustard Brown



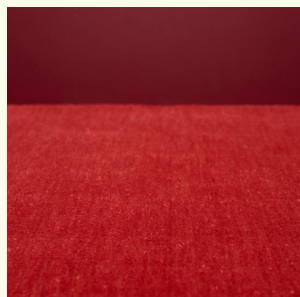
Natural Undyed Grey



Nude



Off Grey



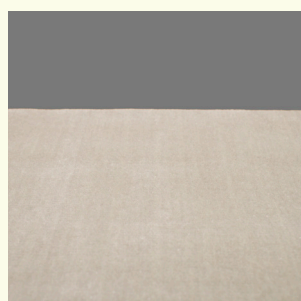
Pompeian Red



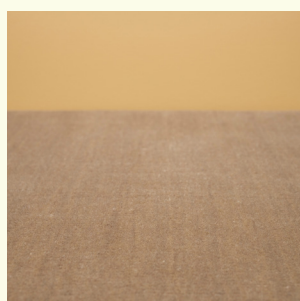
Porcelain Tile



Powder Rose



Silver



Sphinx



Warm Green



Warm Taupe

Pattern repeat
Plain

