



Technique	Hand woven / Flat woven	ISO 2424
Finishing options	Binding uni, Folded sides	
Application	Wall to wall, Area rug, Stairway runner	
Design	Custom colour, Custom shape	
Pile composition	70% New Zealand Wool - 15% Linen - 15% Polyamide	
Total weight	1553 gr/m ²	ISO 8543
Total height	Wall to wall installation - 5.5 mm Finished rug - 6-10 mm	ISO 1766
Maximum width	500 cm	ISO 3018
Pattern repeat	Plain	
Domestic use class	Class 23 / domestic heavy use	ISO 10361
Commercial use class	Class 32 / commercial general use	ISO 10361
Reaction to fire	Bfl-s1	ISO 11925-2
Abrasion resistance	4-5 / change after 4000 cycli	ISO 24338
Slip resistant	Yes	
Thermal resistance (R)	0.058 m ² K/W / Suitable for heated floors	ISO 8302
Other qualities	Impact noise reduction, Sound absorption, Lightfastness, Permanently suitable for castor chairs	



Application as wall-to-wall & stairway runner

For wall to wall installation we strongly recommend the use of an underlay.

For more information visit www.bomat.eu/en/application

Maintenance

Regular vacuuming is indispensable for the maintenance of any kind of carpet. Prerequisite for a successful removal of stains is the identification of the stain type and the correct approach. The sooner a stain is treated, the easier it is to remove.

We advise you to use a professional carpet cleaning company. More info: www.bomat.eu/en/care-and-maintenance

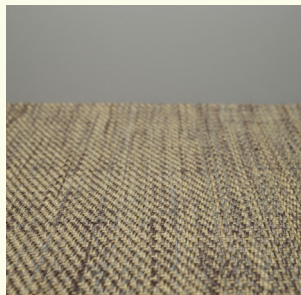
COLLECTION

St James

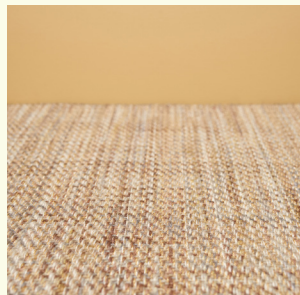


B O M A T

DEEP HUES · SOFT TEXTURES



Dark Slate



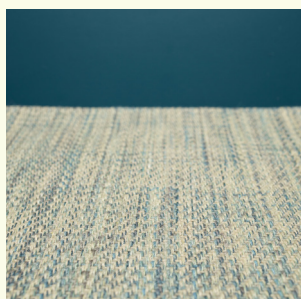
Dusk



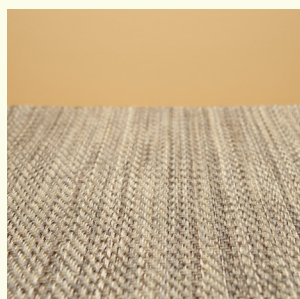
Grey



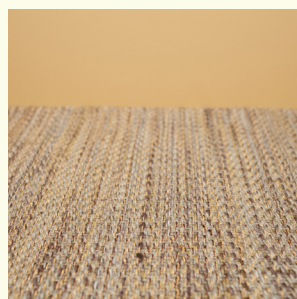
Oyster Grey



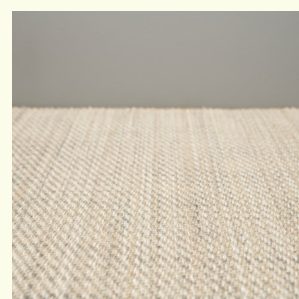
Petrol Blue



Silver Anthracite



Vision



Wood Ash

Pattern repeat
Plain

