



Technique	Hand woven / Low loop pile	ISO 2424
Finishing options	Binding uni	
Application	Wall to wall, Area rug, Stairway runner	 
Design	Custom colour, Custom shape	 
Pile composition	90% New Zealand Wool - 10% Cotton	
Total weight	1385 gr/m <sup>2</sup>	ISO 8543
Total height	Wall to wall installation - 5.5 mm Finished rug - 7 mm	ISO 1766
Maximum width	500 cm	ISO 3018
Pattern repeat	Plain	
Domestic use class	Class 23 / domestic heavy use	ISO 10361 
Commercial use class	Class 32 / commercial general use	ISO 10361 
Reaction to fire	Bfl-s1	ISO 11925-2 
Abrasion resistance	4-5 / change after 4000 cycli	ISO 24338 
Slip resistant	Yes	
Thermal resistance (R)	Suitable for heated floors	ISO 8302 
Luxury class	Luxury Class 2	
Other qualities	Impact noise reduction, Sound absorption, Lightfastness Permanently suitable for castor chairs	   

### Application as wall-to-wall & stairway runner

For wall to wall installation we strongly recommend the use of an underlay.

For more information visit [www.bomat.eu/en/application](http://www.bomat.eu/en/application)

### Maintenance

Regular vacuuming is indispensable for the maintenance of any kind of carpet. Prerequisite for a successful removal of stains is the identification of the stain type and the correct approach. The sooner a stain is treated, the easier it is to remove.

We advise you to use a professional carpet cleaning company. More info: [www.bomat.eu/en/care-and-maintenance](http://www.bomat.eu/en/care-and-maintenance)

COLLECTION

# Rivoli Wool



# B O M A T

DEEP HUES · SOFT TEXTURES



Burnt Brick



Castle Wall



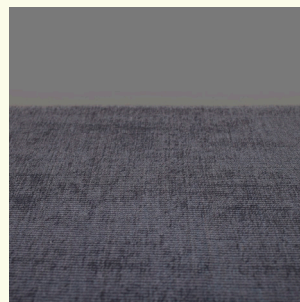
Copper



Flint Grey



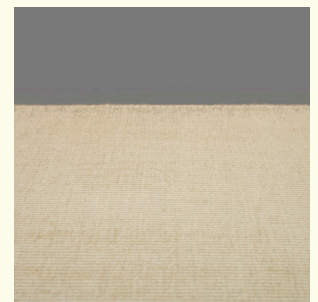
Fungi



Lava Stone



Medium Brown



Mossed Concrete



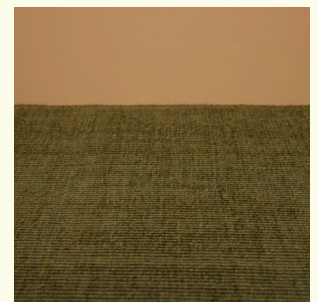
Mustard brown



Polyfloor



Porcelain Tile



Warm Green

COLLECTION

# Rivoli Wool



# B O M A T

DEEP HUES · SOFT TEXTURES



Warm Stone

---

**Pattern repeat**  
Plain

