



Technique	Hand tufted / Cut pile	ISO 2424	
Finishing options	Binding uni		
Application	Wall to wall, Area rug		 
Design	Custom colour, Custom shape		 
Pile composition	60% Wool - 30% Tencel - 10% Cotton		
Total weight	3250 gr/m <sup>2</sup>	ISO 8543	
Total height	Wall to wall installation - 14 mm Finished rug - 16 mm	ISO 1766	
Maximum width	600 cm	ISO 3018	
Pattern repeat	Plain		
Domestic use class	Class 21 / domestic light use	ISO 10361	
Commercial use class	Not applicable	ISO 10361	
Reaction to fire	Dfl-s1	ISO 11925-2	
Abrasion resistance	3 / change after 4000 rotations	ISO 24338	
Slip resistant	Yes		
Thermal resistance (R)	Suitable for heated floors	ISO 8302	
Luxury class	Luxury Class 5		
Other qualities	Impact noise reduction, Sound absorption, Avoid contact with water liquids		  

### Application as wall-to-wall & stairway runner

For wall to wall installation we strongly recommend the use of an underlay.

For more information visit [www.bomat.eu/en/application](http://www.bomat.eu/en/application)

### Maintenance

Regular vacuuming is indispensable for the maintenance of any kind of carpet. Prerequisite for a successful removal of stains is the identification of the stain type and the correct approach. The sooner a stain is treated, the easier it is to remove.

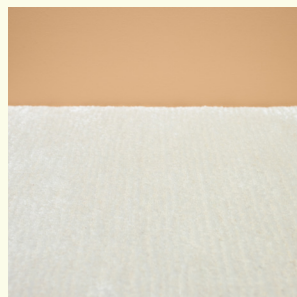
We advise you to use a professional carpet cleaning company. More info: [www.bomat.eu/en/care-and-maintenance](http://www.bomat.eu/en/care-and-maintenance)



Ecrú



Perle



Platina



Silver



Wind Chime

---

**Pattern repeat**  
Plain

