



Technique	Hand tufted / Cut- and loop pile	ISO 2424
Finishing options	Binding uni	
Application	Wall to wall, Area rug, Stairway runner	
Design	Custom colour, Custom shape	
Pile composition	95% New Zealand Wool - 5% Cotton	
Total weight	4000 g/m ²	ISO 8543
Total height	Wall to wall installation - 13 mm finished rug - 15 mm	ISO 1766
Maximum width	600 cm	ISO 3018
Pattern repeat	3 cm x 18 cm	
Domestic use class	Class 23 / domestic heavy use	ISO 10361
Commercial use class	Class 32 / commercial general use	ISO 10361
Reaction to fire	Bfl-s1	ISO 9239-1
Abrasion resistance	4 / change after 4000 rotations	ISO 24338
Slip resistant	Yes	
Thermal resistance (R)	0,2392 m ² .K/W	ISO 8302
Luxury class	Luxury Class 5	
Other qualities	Impact noise reduction, Sound absorption	



Application as wall-to-wall & stairway runner

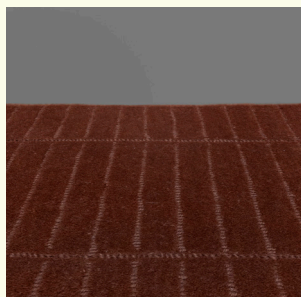
For wall to wall installation we strongly recommend the use of an underlay.

For more information visit www.bomat.eu/en/application

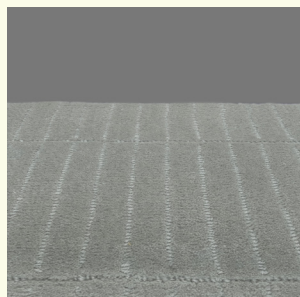
Maintenance

Regular vacuuming is indispensable for the maintenance of any kind of carpet. Prerequisite for a successful removal of stains is the identification of the stain type and the correct approach. The sooner a stain is treated, the easier it is to remove.

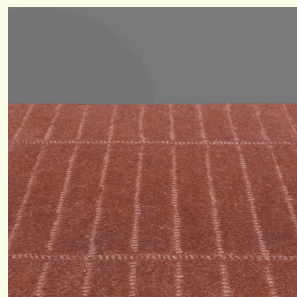
We advise you to use a professional carpet cleaning company. More info: www.bomat.eu/en/care-and-maintenance



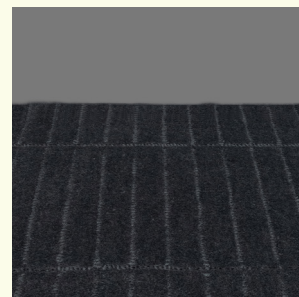
Burnt Brick



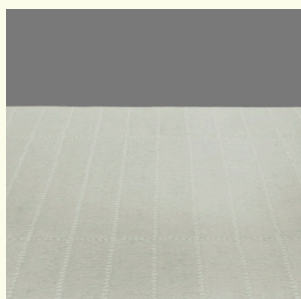
Castle Wall



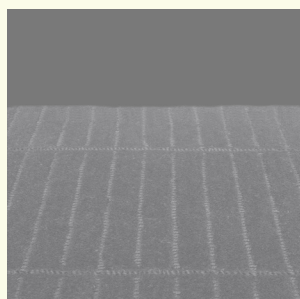
Fired Brick



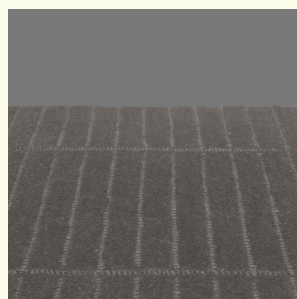
Lava Stone



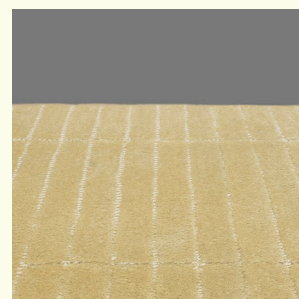
Plaster



Polyfloor



Warm Stone



Yellow Brick

Pattern repeat
3 cm x 18 cm

