



Technique	Hand woven / Cut- and loop pile	ISO 2424
Finishing options	Binding uni	
Application	Wall to wall, Area rug	
Design	Custom colour, Custom shape	
Pile composition	60% Tencel - 40% Cotton	
Total weight	3665 gr/m ²	ISO 8543
Total height	Wall to wall installation - 11.5 mm Finished rug - 13.5 mm	ISO 1766
Maximum width	450 cm	ISO 3018
Pattern repeat	Lines (horizontal)	
Domestic use class	Class 21 / domestic light use	ISO 10361
Commercial use class	Not applicable	ISO 10361
Reaction to fire	Dfl-s1	ISO 11925-2
Abrasion resistance	3 / change after 4000 cycli	ISO 24338
Slip resistant	Yes	
Thermal resistance	Suitable for heated floors	
Luxury class	Luxury class 5	ISO 8302
Other qualities	Impact noise reduction, Sound absorption, Avoid contact with water and liquids	

Application as wall-to-wall & stairway runner

For wall to wall installation we strongly recommend the use of an underlay.

For more information visit www.bomat.eu/en/application

Maintenance

Regular vacuuming is indispensable for the maintenance of any kind of carpet. Prerequisite for a successful removal of stains is the identification of the stain type and the correct approach. The sooner a stain is treated, the easier it is to remove.

We advise you to use a professional carpet cleaning company.

More info: www.bomat.eu/en/care-and-maintenance



Chalky Brown - Terracotta



Coffee - Jet Black



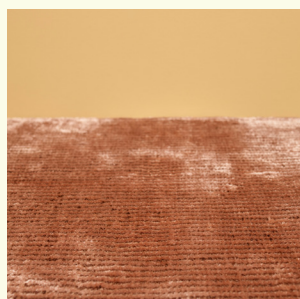
Copper - Deep Orange



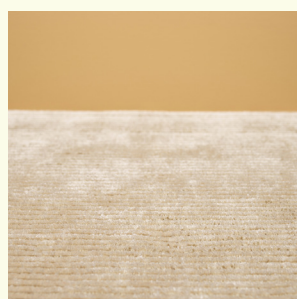
Mist - Brown



Off Grey - Warm Taupe



Powder Rose - Deep Brown



Sand - Natural



Vanilla - Mustard Brown



Vanilla - Warm Taupe



Warm Taupe - Copper

Pattern repeat
Lines (horizontal)

