



Technique	Hand tufted / High cut pile	ISO 2424
Finishing options	Binding uni	
Application	Wall to wall, Area rug	
Design	Custom colour, Custom shape, Proposed organic shapes	
Pile composition	60% Wool - 35% Tencel - 5% Cotton	
Total weight	5305 gr/m <sup>2</sup>	ISO 8543
Total height	Wall to wall installation - 32 mm Finished rug - 34 mm	ISO 1766
Maximum width	600 cm	ISO 3018
Pattern repeat	Plain	
Domestic use class	Class 22 / domestic general use	ISO 10361
Commercial use class	Not applicable	ISO 10361
Reaction to fire	Efl-s1	ISO 11925-2
Abrasion resistance	2.5 / change after 4000 cycli	ISO 24338
Slip resistant	Yes	
Thermal resistance (R)	Suitable for heated floors	ISO 8302
Luxury class	Luxury Class 5	
Other qualities	Impact noise reduction, Sound absorption, Avoid contact with water and liquids	



### Application as wall-to-wall & stairway runner

For wall to wall application we strongly recommend the use of an underlay.

For more information visit [www.bomat.eu/en/application](http://www.bomat.eu/en/application)

### Maintenance

Regular vacuuming is indispensable for the maintenance of any kind of carpet. Prerequisite for a successful removal of stains is the identification of the stain type and the correct approach. The sooner a stain is treated, the easier it is to remove.

We advise you to use a professional carpet cleaning company.

More info: [www.bomat.eu/en/care-and-maintenance](http://www.bomat.eu/en/care-and-maintenance)

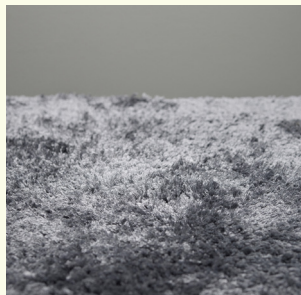
COLLECTION

# Cruise



# B O M A T

DEEP HUES · SOFT TEXTURES



Beluga



Birch



Blush



Castle Wall



Coffee



Fungi



Graphite



Griffin



Lilac Ash



Medium Brown



Moon Mist



Mossed Concrete



Mustard Brown



Natural



Paloma



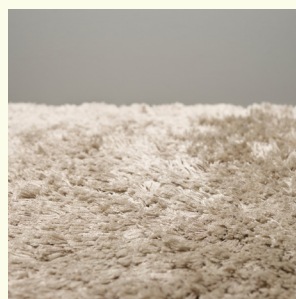
Polyfloor



Porcelain Tile



Powder Rose



Taupe



Warm Stone



Wind Chime

---

**Pattern repeat**  
Plain

