



Technique	Hand woven / Cut pile	ISO 2424
Finishing options	Binding uni	
Application	Wall to wall, Area rug	
Design	Custom colour, Custom shape	
Pile composition	90% Tencel - 10% Cotton	
Total weight	3950 gr/m ²	ISO 8543
Total height	Wall to wall installation - 9 mm Finished rug - 11 mm	ISO 1766
Maximum width	600 cm	ISO 3018
Pattern repeat	Plain	
Domestic use class	Class 22 / domestic general use	ISO 10361
Commercial use class	Class 31 / commercial light use	ISO 10361
Reaction to fire	Cfl-s1	ISO 11925-2
Abrasion resistance	3 / change after 4000 cycli	ISO 24338
Slip resistant	Yes	
Thermal resistance (R)	Suitable for heated floors	ISO 8302
Luxury class	Luxury Class 5	
Other qualities	Impact noise reduction, Sound absorption, Avoid contact with water and liquids	



Application as wall-to-wall & stairway runner

For wall to wall installation we strongly recommend the use of an underlay.

For more information visit www.bomat.eu/en/application

Maintenance

Regular vacuuming is indispensable for the maintenance of any kind of carpet. Prerequisite for a successful removal of stains is the identification of the stain type and the correct approach. The sooner a stain is treated, the easier it is to remove.

We advise you to use a professional carpet cleaning company.

More info: www.bomat.eu/en/care-and-maintenance

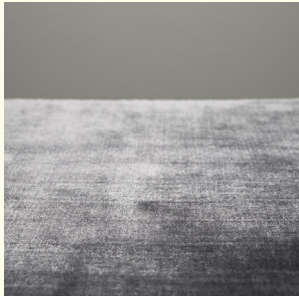
COLLECTION

Brindisi



B O M A T

DEEP HUES · SOFT TEXTURES



Beluga



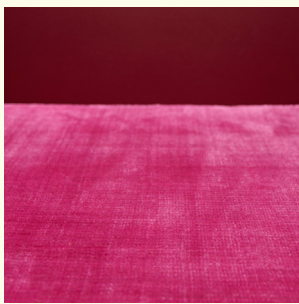
Birch



Cement



Deep Brown



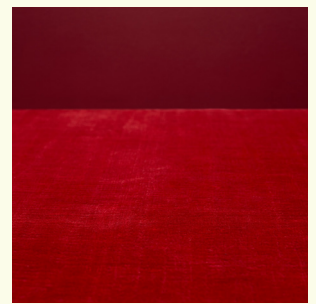
Fuchsia



Fungi



Griffin



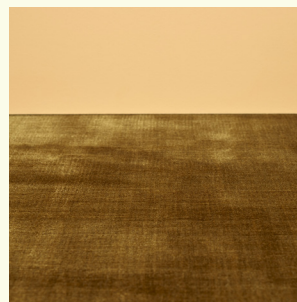
Lava Red



Medium Brown



Merlot



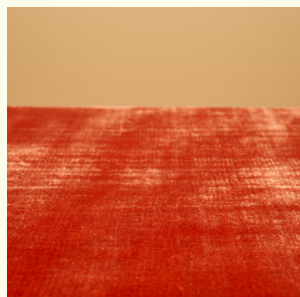
Mustard Brown



Off Grey



Powder Rose



Red Orange



Terre Cuite



Vert Ajonc



Warm Taupe



Wind Chime



Wood Ash

Pattern repeat
Plain

