



Technique	Hand woven / Flat woven	ISO 2424
Finishing options	Binding uni, Folded sides, Fringes top & bottom + selvages, Top & end folded blind + selvages	
Application	Wall to wall, Area rug, Stairway runner	
Design	Custom colour, Custom shape	
Pile composition	75% New Zealand Wool - 25% Polyamide	
Total weight	2000 gr/m ²	ISO 8543
Total height	Wall to wall installation - 4.5 mm Finished rug - 8-12 mm	ISO 1765
Maximum width	500 cm	ISO 3018
Pattern repeat	19 cm	
Domestic use class	Class 23 / domestic heavy use	ISO 10361
Commercial use class	Class 33 / commercial heavy use	ISO 10361
Reaction to fire	Bfl-s1	ISO 9239-1
Abrasion resistance	Martindale: no thread breakage at 100,000 cycli	ISO 12947
Slip resistant	Yes	
Thermal resistance (R)	0,066 m ² K/W / suitable for heated floors	ISO 8302
Other qualities	Impact noise reduction, Sound absorption, Permanently suitable for castor chairs	



Application as wall-to-wall & stairway runner

For wall to wall installation we strongly recommend the use of an underlay.

For more information visit www.bomat.eu/en/application

Maintenance

Regular vacuuming is indispensable for the maintenance of any kind of carpet. Prerequisite for a successful removal of stains is the identification of the stain type and the correct approach. The sooner a stain is treated, the easier it is to remove.

We advise you to use a professional carpet cleaning company. More info: www.bomat.eu/en/care-and-maintenance

COLLECTION

Clarence



B O M A T

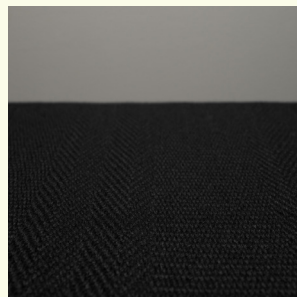
DEEP HUES · SOFT TEXTURES



Beige



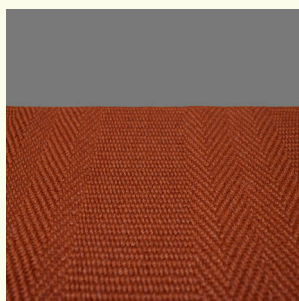
Birch



Black



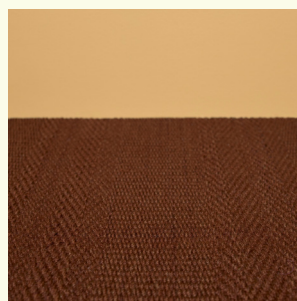
Black Ink



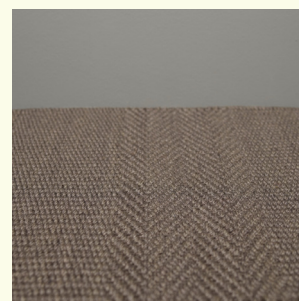
Burnt Brick



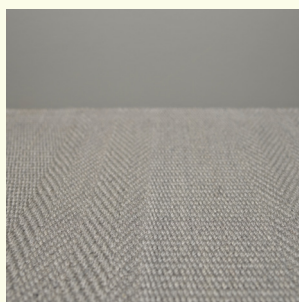
Clay



Deep Brown



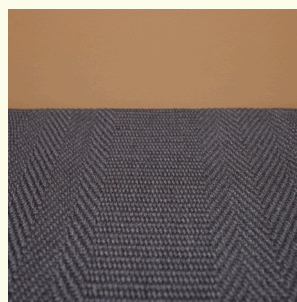
Ebony



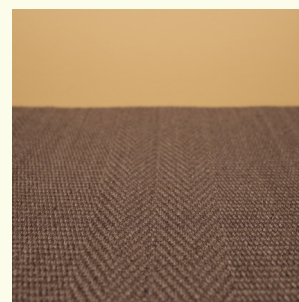
Fog



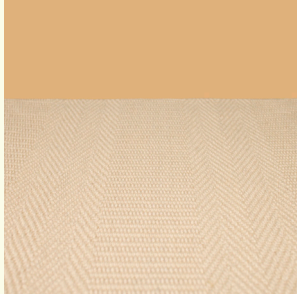
Griffin



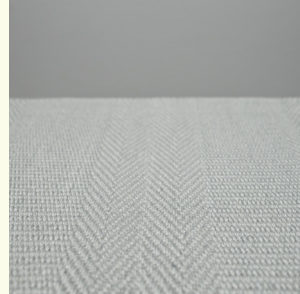
Lava Stone



Medium Brown



Mineral



Moon Mist



Mustard Brown



Off Grey



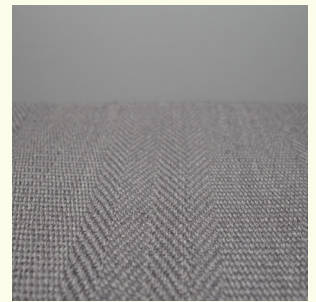
Powder Rose



Polyfloor



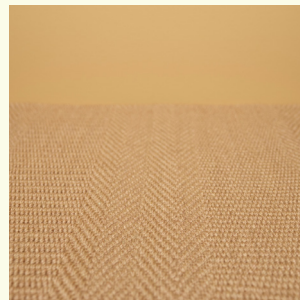
Sage Grey



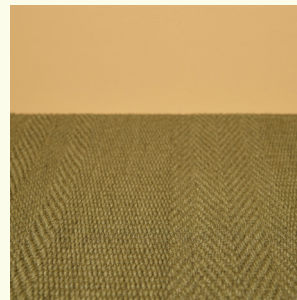
Slate



Smokey Quartz



Tobacco



Warm Green

Pattern repeat
19 cm

9 cm 2 cm 3 cm

