
















Technique	Hand woven / Flat woven	ISO 2424
Finishing options	Binding uni, Folded sides, Fringes top & bottom + selvages, Top & end folded blind + selvages	   
Application	Wall to wall, Area rug, Stairway runner	  
Design	Custom colour, Custom shape	 
Pile composition	75% Wool - 25% Polyamide	
Total weight	2000 gr/m ²	ISO 8543
Total height	Wall to wall installation - 5.5 mm Finished rug - 8-12 mm	ISO 1765
Maximum width	500 cm	ISO 3018
Pattern repeat	30 cm x 6 cm	
Domestic use class	Class 23 / domestic heavy use	ISO 10361
Commercial use class	Class 33 / commercial heavy use	ISO 10361
Reaction to fire	Bfl-s1	ISO 9239-1
Abrasion resistance	Martindale: no thread breakage at 100,000 cycli	ISO 12947
Slip resistant	Yes	
Thermal resistance (R)	0,066 m ² K/W / suitable for heated floors	ISO 8302
Other qualities	Suitable for castor chairs, Impact noise reduction, Sound absorption,	  

Application as wall-to-wall & stairway runner

For wall to wall application we strongly recommend the use of an underlay.

For more information visit www.bomat.eu/en/application

Maintenance

Regular vacuuming is indispensable for the maintenance of any kind of carpet. Prerequisite for a successful removal of stains is the identification of the stain type and the correct approach. The sooner a stain is treated, the easier it is to remove.

We advise you to use a professional carpet cleaning company.

More info: www.bomat.eu/en/care-and-maintenance

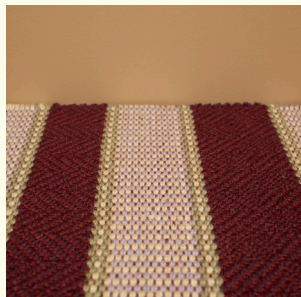
COLLECTION

Westminster



B O M A T

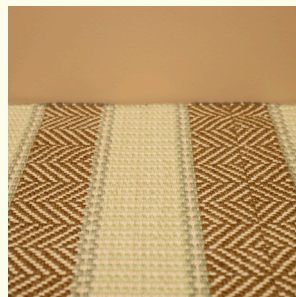
DEEP HUES · SOFT TEXTURES



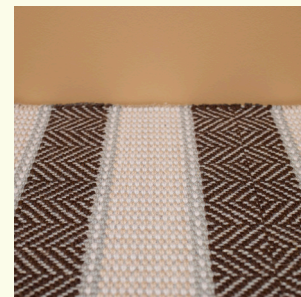
Burgundy Rose



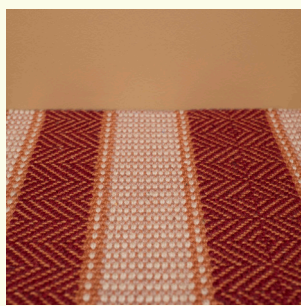
Deep Orange



Dusty Lime



Soft Walnut



Warm Red

Pattern repeat
30 cm x 6 cm

