



Technique	Hand woven / Loop pile	ISO 2424
Finishing options	Binding uni	
Application	Wall to wall, Area rug	
Design	Custom colour, Custom shape	
Pile composition	60% Wool - 20% Polyamide - 20% Cotton	
Total weight	3840 g/m ²	ISO 8543
Total height	Wall to wall installation - 8 mm Finished rug - 10 mm	ISO 1766
Maximum width	457 cm	ISO 3018
Pattern repeat	5 cm x 6.5 cm	
Domestic use class	Class 23 / domestic heavy use	ISO 10361
Commercial use class	Class 32 / commercial medium use	ISO 10361
Reaction to fire	Bfl-s1	ISO 11925-2
Abrasion resistance	4 / change after 4000 rotations	ISO 24338
Slip resistant	Yes	
Thermal resistance (R)	Suitable for heated floors	ISO 8302
Luxury class	Luxury Class 2	
Other qualities	Suitable for castor chairs, Impact noise reduction, Sound absorption, Lightfastness	



Application as wall-to-wall & stairway runner

For wall to wall application we strongly recommend the use of an underlay.

For more information visit www.bomat.eu/en/application

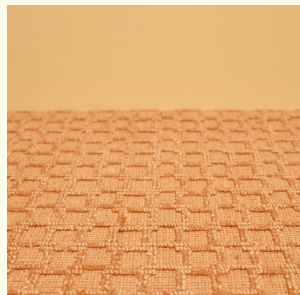
Maintenance

Regular vacuuming is indispensable for the maintenance of any kind of carpet. Prerequisite for a successful removal of stains is the identification of the stain type and the correct approach. The sooner a stain is treated, the easier it is to remove.

We advise you to use a professional carpet cleaning company. More info: www.bomat.eu/en/care-and-maintenance



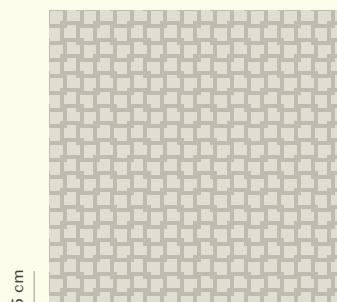
Blush



Chalky Brown

Pattern repeat
5 cm x 6.5 cm

6.5 cm



5 cm