



Technique	Hand woven / Cut Pile	ISO 2424
Finishing options	Binding uni	
Application	Wall to wall, Area rug	
Design	Custom colour, Custom shape	
Pile composition	90% Silk - 10% Cotton	
Total weight	3300 gr/m ²	ISO 8543
Total height	Wall to wall installation - 11.5 mm Finished rug - 13.5 mm	ISO 1766
Maximum width	500 cm	ISO 3018
Pattern repeat	Plain	
Domestic use class	Class 23 / domestic heavy use	ISO 10361
Commercial use class	Class 31 / commercial general use	ISO 10361
Reaction to fire	Cfl-s1	ISO 11925-2
Abrasion resistance	4 / change after 4000 cycli	ISO 24338
Slip resistant	Yes	
Luxury class	Luxury class 5	ISO 8302
Other qualities	Impact noise reduction, Sound absorption, Avoid contact with water and liquids	



Application as wall-to-wall & stairway runner

For wall to wall application we strongly recommend the use of an underlay.

For more information visit www.bomat.eu/en/application

Maintenance

Regular vacuuming is indispensable for the maintenance of any kind of carpet. Prerequisite for a successful removal of stains is the identification of the stain type and the correct approach. The sooner a stain is treated, the easier it is to remove.

We advise you to use a professional carpet cleaning company. More info: www.bomat.eu/en/care-and-maintenance



Amber



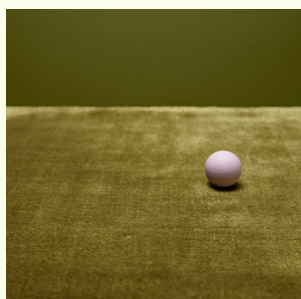
Blush



Chateau Grey



Dusty Yellow



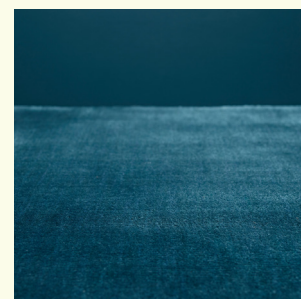
Fir Green



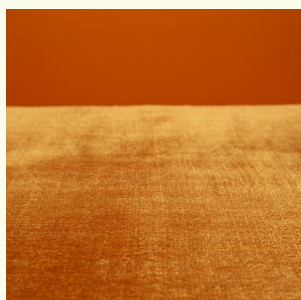
Golden Brown



Merlot



Ocean Blue



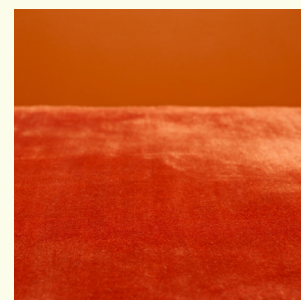
Orange Brown



Orchid



Orion Blue



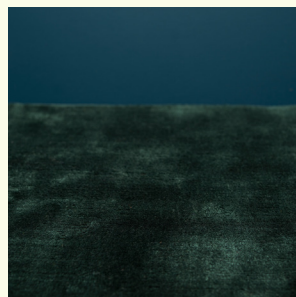
Paprika



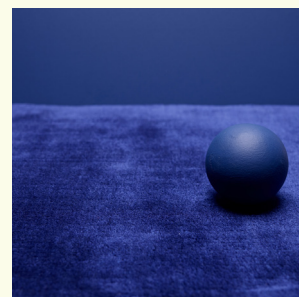
Pearl Orange



Pesto



Pine Green



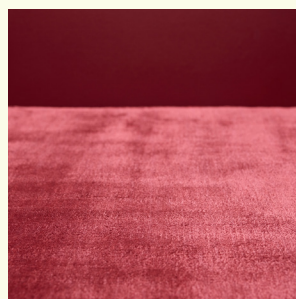
Royal Blue



Sage



Taupe



Tawny port

Pattern repeat
Plain

