



|                        |   |             |
|------------------------|---|-------------|
| Technique              | Hand woven / Cut pile                                     | ISO 2424    |
| Finishing options      | Binding uni   |             |
| Application            | Wall to wall, Area rug                                    |             |
| Design                 | Custom colour, Custom shape                               |             |
| Pile composition       | 90% New Zealand Wool - 10% Cotton                         |             |
| Total weight           | 4407 gr/m <sup>2</sup>                                    | ISO 8543    |
| Total height           | Wall to wall installation - 14 mm<br>Finished rug - 16 mm | ISO 1766    |
| Maximum width          | 500 cm  | ISO 3018    |
| Pattern repeat         | Plain   |             |
| Domestic use class     | Class 23 / domestic heavy use                             | ISO 10361   |
| Commercial use class   | Class 33 / commercial heavy use                           | ISO 10361   |
| Reaction to fire       | Bfl-s1  | ISO 11925-2 |
| Abrasion resistance    | 3 / change after 4000 cycli                               | ISO 24338   |
| Slip resistant         | Yes   |             |
| Thermal resistance (R) | Suitable for heated floors                                | ISO 8302    |
| Luxury class           | Luxury Class 5  |             |
| Other qualities        | Impact noise reduction, Sound absorption, Lightfastness   |             |



### Application as wall-to-wall & stairway runner

For wall to wall application we strongly recommend the use of an underlay.

For more information visit [www.bomat.eu/en/application](http://www.bomat.eu/en/application)

### Maintenance

Regular vacuuming is indispensable for the maintenance of any kind of carpet. Prerequisite for a successful removal of stains is the identification of the stain type and the correct approach. The sooner a stain is treated, the easier it is to remove.

We advise you to use a professional carpet cleaning company. More info: [www.bomat.eu/en/care-and-maintenance](http://www.bomat.eu/en/care-and-maintenance)

COLLECTION

# Cornwool



# B O M A T

DEEP HUES · SOFT TEXTURES



Copper



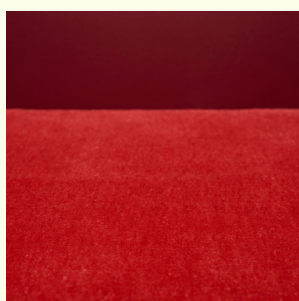
Deep Brown



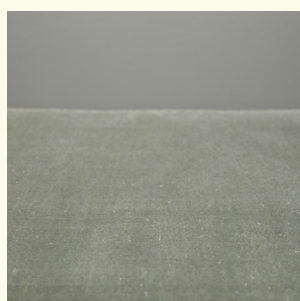
Deep Orange



Laurel Oak



Lava Red



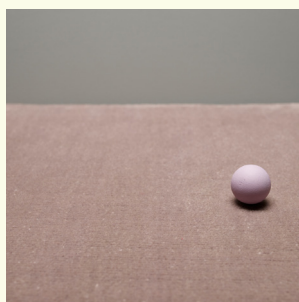
Moon Mist



Pale Lilac



Rabbit



Sphinx



Vanilla



Warm Grey



Warm Taupe

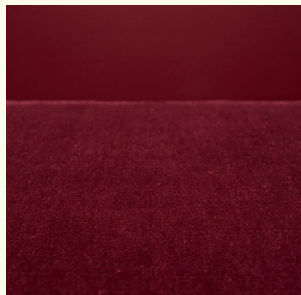
COLLECTION

# Cornwool



# B O M A T

DEEP HUES · SOFT TEXTURES



Windsor Wine

---

**Pattern repeat**  
Plain

