



Technique	Hand tufted / High cut pile	ISO 2424
Finishing options	Binding uni	
Application	Wall to wall, Area rug	
Design	Custom colour, Custom shape, Proposed organic shapes	
Pile composition	90% Tencel - 10% Cotton	
Total weight	3205 g/m²	ISO 8543
Total height	Wall to wall installation - 18 mm Finished rug - 20 mm	ISO 1766
Maximum width	600 cm	ISO 3018
Pattern repeat	Plain	
Domestic use class	Class 22 / domestic general use	ISO 10361
Commercial use class	Not applicable	ISO 10361
Reaction to fire	Efl-s1	ISO 11925-2
Abrasion resistance	2.5 / change after 4000 cycli	ISO 24338
Slip resistant	Yes	
Thermal resistance (R)	Suitable for heated floors	ISO 8302
Luxury class	Luxury Class 5	
Other qualities	Impact noise reduction, Sound absorption, Avoid contact with water and liquids	



Application as wall-to-wall & stairway runner

For wall to wall application we strongly recommend the use of an underlay.

For more information visit www.bomat.eu/en/application

Maintenance

Regular vacuuming is indispensable for the maintenance of any kind of carpet. Prerequisite for a successful removal of stains is the identification of the stain type and the correct approach. The sooner a stain is treated, the easier it is to remove.

We advise you to use a professional carpet cleaning company.

More info: www.bomat.eu/en/care-and-maintenance



Birch



Cement



Coffee



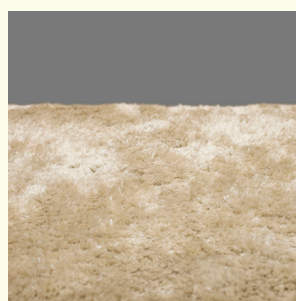
Fungi



Lilac Ash



Medium Brown



Mossed Concrete



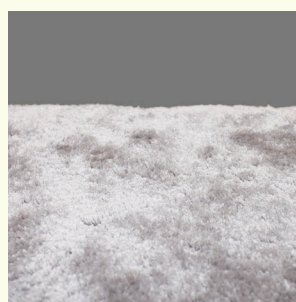
Mustard Brown



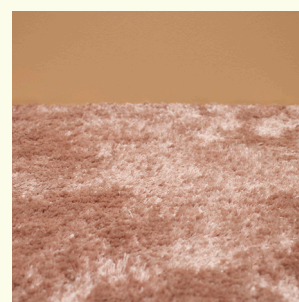
Natural



Paloma



Polyfloor



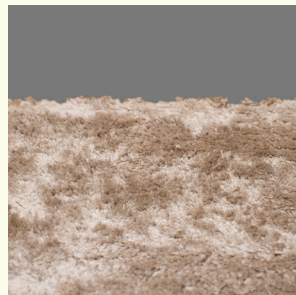
Powder Rose



Sage



Taupe



Warm Stone



Wind Chime

Pattern repeat
Plain

