



Technique	Hand woven / Flat woven	ISO 2424
Finishing options	Binding uni, Folded sides, Top & end folded blind + selvages	
Application	Wall to wall, Area rug	
Design	Custom colour, Custom shape	
Pile composition	75% New Zealand Wool - 25% Polyamide	
Total weight	2300 gr/m ²	ISO 8543
Total height	Wall to wall installation - 5.5 mm Finished rug - 8-12 mm	ISO 1765
Maximum width	500 cm	ISO 3018
Pattern repeat	6 cm	
Domestic use class	Class 23 / domestic heavy use	ISO 10361
Commercial use class	Class 33 / commercial heavy use	ISO 10361
Reaction to fire	Bfl-s1	ISO 9239-1
Abrasion resistance	Martindale: no thread breakage at 100,000 cycles	ISO 12947
Slip resistant	Yes	
Thermal resistance (R)	0,066 m ² K/W / suitable for heated floors	ISO 8302
Other qualities	Suitable for castor chairs, Impact noise reduction, Sound absorption,	



Application as wall-to-wall & stairway runner

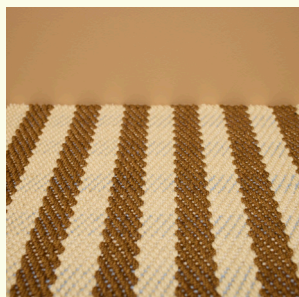
For wall to wall application we strongly recommend the use of an underlay.

For more information visit www.bomat.eu/en/application

Maintenance

Regular vacuuming is indispensable for the maintenance of any kind of carpet. Prerequisite for a successful removal of stains is the identification of the stain type and the correct approach. The sooner a stain is treated, the easier it is to remove.

We advise you to use a professional carpet cleaning company. More info: www.bomat.eu/en/care-and-maintenance



French Vanilla

Pattern repeat
6 cm

3 cm

