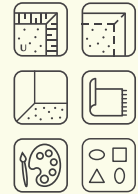




Technique	Hand woven / Flat woven	ISO 2424
Finishing options	Binding uni, Folded sides	
Application	Wall to wall, Area rug	
Design	Custom colour, Custom shape	
Pile composition	60% New Zealand Wool - 40% Tencel	
Total weight	1280 gr/m ²	ISO 8543
Total height	Wall to wall installation - 3.5 mm Finished rug - 6 mm	ISO 1766
Maximum width	500 cm	ISO 3018
Pattern repeat	3.5 cm	
Domestic use class	Class 21 / domestic light use	ISO 10361
Commercial use class	Not applicable	ISO 10361
Reaction to fire	Cfl-s1	ISO 11925-2
Abrasion resistance	3-4 / change after 4000 cycli	ISO 24338
Slip resistant	Yes	
Thermal resistance (R)	Suitable for heated floors	ISO 8302
Other qualities	Impact noise reduction, Sound absorption, Avoid contact with water and liquids	



Application as wall-to-wall & stairway runner

For wall to wall installation we strongly recommend the use of an underlay.

For more information visit www.bomat.eu/en/application

Maintenance

Regular vacuuming is indispensable for the maintenance of any kind of carpet. Prerequisite for a successful removal of stains is the identification of the stain type and the correct approach. The sooner a stain is treated, the easier it is to remove.

We advise you to use a professional carpet cleaning company.

More info: www.bomat.eu/en/care-and-maintenance

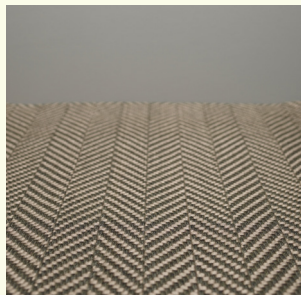
COLLECTION

Beauchamps



B O M A T

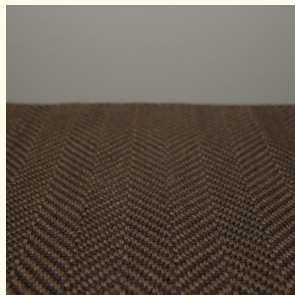
DEEP HUES · SOFT TEXTURES



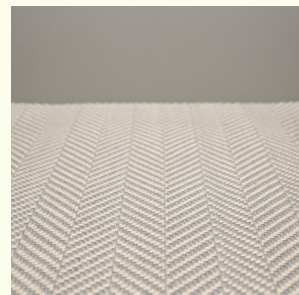
Beluga - Coffee



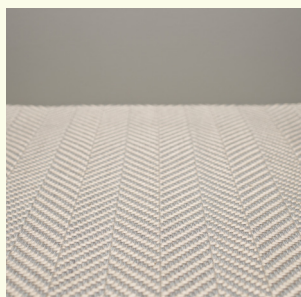
Birch - Pure white



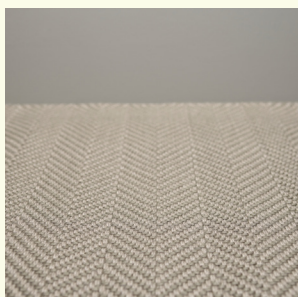
Coffee - Jet Black



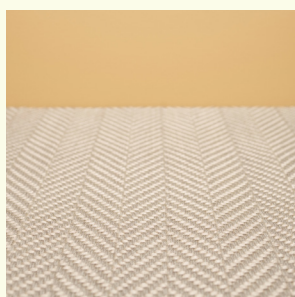
Griffin - Fungi



Griffin - Paloma



Paloma - Bungee cord



Paloma - Fungi

Pattern repeat
3.5 cm

