



Technique	Hand tufted / Cut- and loop pile	ISO 2424
Finishing options	Binding uni	
Application	Wall to wall, Finished rug	
Design	Custom shape + Custom colour	
Pile composition	100% wool	
Pile weight	3500 g/m ²	ISO 8543
Total weight	4000 g/m ²	ISO 8543
Pile density	Unknown	ISO 8543
Pile height	Cut Pile 10 mm Loop Pile 6 mm	ISO 1766
Total height	13 mm	ISO 1765
Maximum width	500 cm	ISO 3018
Pattern repeat	3 cm x 18 cm	
Domestic use class	Class 23 / domestic heavy use	ISO 10361
Commercial use class	Class 32 / commercial general use	ISO 10361
Reaction to fire	Bfl-s1	ISO 9239-1
Abrasion resistance	4 / change after 4000 rotations	ISO 24338
Slip resistant	Yes	
Thermal resistance (R)	0,2392 m ² .K/W	ISO 8302
Luxury class	-	
Other qualities	-	



Available colours + Pattern repeat

See next page

Maintenance

Regular vacuuming is indispensable for the maintenance of any kind of carpet. Prerequisite for a successful removal of stains is the identification of the stain type and the correct approach. The sooner a stain is treated, the easier it is to remove. We advise you to use a professional carpet cleaning company. We recommend www.safe-clean-service.be. More info: www.bomat.eu/en/care-and-maintenance

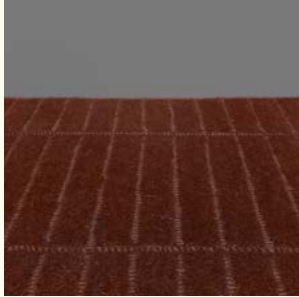
COLLECTION

Lina

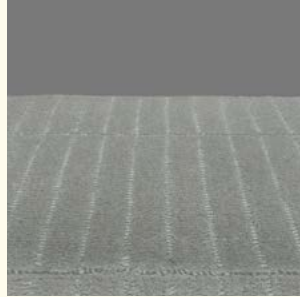


B O M A T

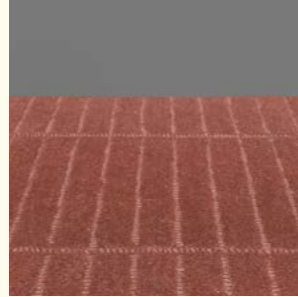
DEEP HUES · SOFT TEXTURES



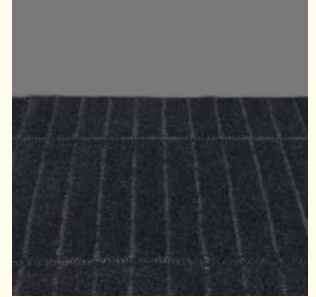
Burnt Brick



Castle Wall



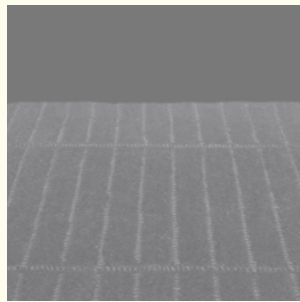
Fired Brick



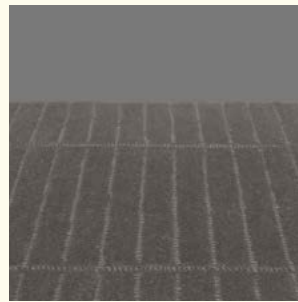
Lava Stone



Plaster



Poly Floor



Warm stone



Yellow Brick

Pattern repeat
3x18 cm

