



Technique	Hand woven / Cut- and loop pile	ISO 2424
Finishing options	Binding	
Application	Wall to wall, Finished rug	
Design	Custom shape + Custom colour	
Pile composition	100% wool	
Pile weight	3000 g/m <sup>2</sup>	ISO 8543
Total weight	4000 g/m <sup>2</sup>	ISO 8543
Pile density	0,183 g/m <sup>3</sup>	ISO 8543
Pile height	Cut Pile 4,5 mm Loop Pile 3 mm	ISO 1766
Total height	10 mm	ISO 1765
Maximum width	457 cm	ISO 3018
Pattern repeat	54 cm x 24 cm	
Domestic use class	Class 23 / domestic heavy use	ISO 10361
Commercial use class	Class 32 / commercial general use	ISO 10361
Reaction to fire	Bfl-s1	ISO 9239-1
Abrasion resistance	3 / change after 4000 rotations	ISO 24338
Slip resistant	Yes	
Thermal resistance (R)	0,1906 m <sup>2</sup> .K/W / suited for floor heating	ISO 8302
Luxury class	Luxury class 3	
Other qualities	-	



### Available colours + Pattern repeat

See next page

### Maintenance

Regular vacuuming is indispensable for the maintenance of any kind of carpet. Prerequisite for a successful removal of stains is the identification of the stain type and the correct approach. The sooner a stain is treated, the easier it is to remove.

We advise you to use a professional carpet cleaning company.

We recommend [www.safe-clean-service.be](http://www.safe-clean-service.be)

More info: [www.bomat.eu/en/care-and-maintenance](http://www.bomat.eu/en/care-and-maintenance)

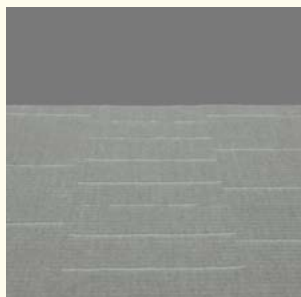
COLLECTION

Frank

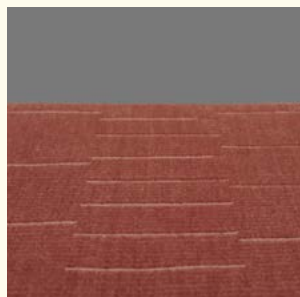


B O M A T

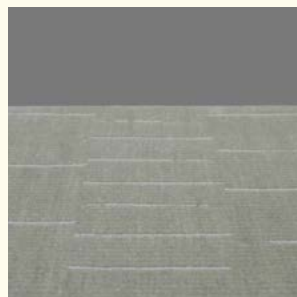
DEEP HUES · SOFT TEXTURES



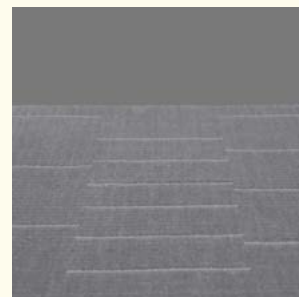
Castle Wall



Fired Brick



Mossed Concrete



Poly Floor

Pattern repeat  
54x24 cm

