



# Ancona

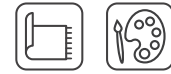
COLLECTION

<b>Technique</b>	Handtufted / Cut- and loop pile
<b>Finishing</b>	Binding
<b>Composition</b>	40% wool, 60% tencel
<b>Dimensions</b>	Custom sizes
<b>Total Height</b>	15,5 mm
<b>Max. Width</b>	500 cm

### Finishing



### Use



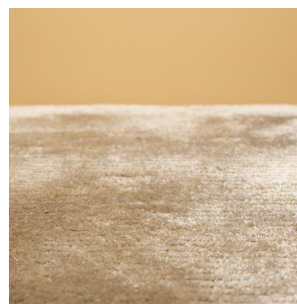
### Security



Beluga



Coffee



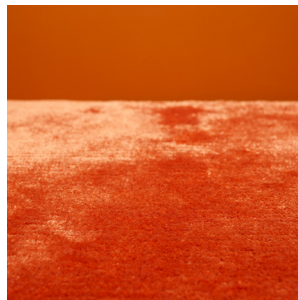
Fungi



Oyster Grey



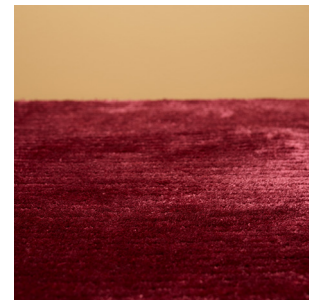
Paloma



Red Orange



Windchime



Windsor Wine