

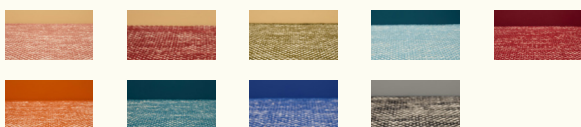
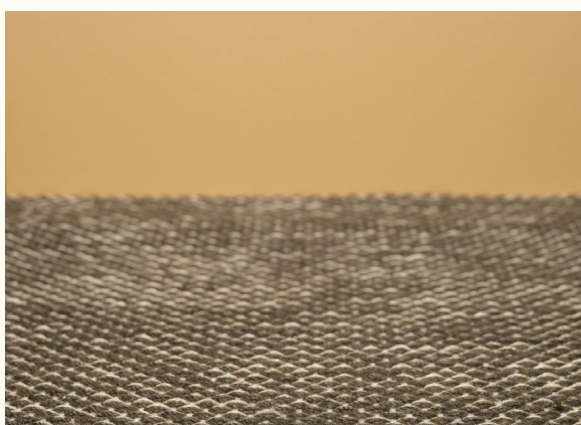


# B O M A T

DEEP HUES · SOFT TEXTURES

## Product sheet

### MANYARA



<b>Technique</b>	Handloom woven flatweave
<b>Dimension</b>	Custom sizes
<b>Composition</b>	Wool - Sisal
<b>Total height</b>	5 mm
<b>Total weight</b>	2285 gr/m <sup>2</sup>
<b>Maximum width</b>	400 cm

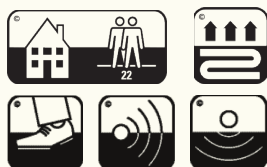
#### Finishing possibilities



#### Customization



#### Use



#### Maintenance

Regular Vacuuming is indispensable for the maintenance of any kind of carpet. Prerequisite for a successful removal of stains is the identification of the stain type and the correct approach. The sooner a stain is treated, the easier it is to remove. We advise you to use a professional carpet cleaning company. We advise you to use a professional carpet cleaning company.

We recommend [www.chemdry.com](http://www.chemdry.com)



# BOMAT

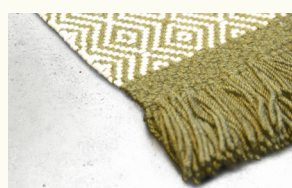
DEEP HUES · SOFT TEXTURES

## Legend of symbols

### Finishing possibilities



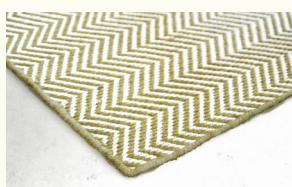
Small cotton border



Fringes



Straight edge



Binding



Zipper



Folded sides



Can be custom-shaped or custom-coloured



Available as broadloom as well as finished carpet



Avoid contact with water & fluids



Available as stairway runner



Class 21 Tested for domestic moderate and light usage.



Class 22 Tested for domestic general and medium.



Class 23 Tested for domestic normal usage and domestic heavy usage.



Class 31 Tested for moderate usage.



Class 32 Tested for normal usage, most commercial.



Class 33 Tested for heavy usage.



Fire retardant carpet (class Cfl-s1)



Fire retardant carpet (class bfl-s1)



Fire retardant carpet (class Efl)



Light fastness



Suitable for stairs



Suitable for stairs - residential



Permanently anti-static



Sound absorption



Non-slip surface



Reduces impact noise



Suitable for heated floors



Suitable for castor chairs - occasional use



Permanently suitable for castor chairs



Luxury class I



Luxury class II



Luxury class III



Luxury class IV



Luxury class V



Abrasion resistance